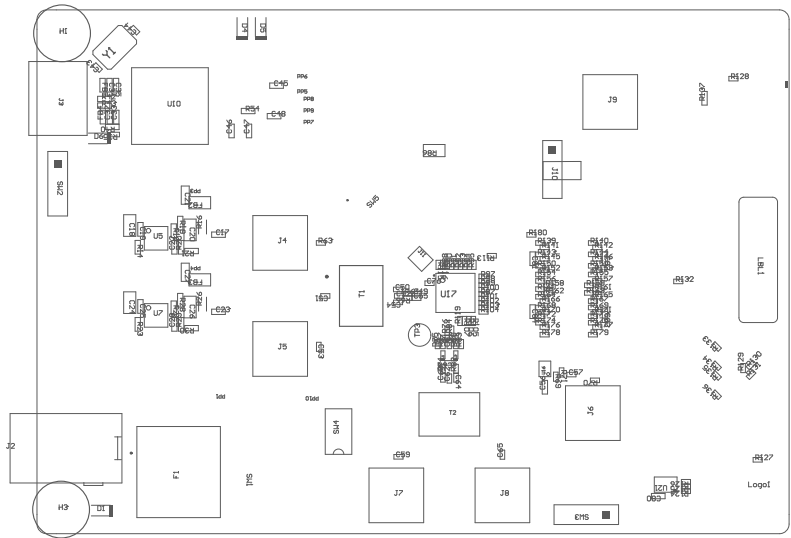


■ These assemblies must comply with workmanship standards IPC-A-610 Class 2, unless otherwise specified.
■ These assemblies must be clean and free from flux and all contaminants. Use of no clean flux is not acceptable.



COMPONENTS MARKED 'DNP' SHOULD NOT BE POPULATED.
ASSEMBLY VARIANT: 001 (ADC3543)

PCB VIEWED FROM TOP SIDE	BOARD #: DC092	REV: G1	SVN REV: a58e6ff928b1c46a2a0dcd37db6576550070a2c5 [Locally Modified]
PLOT NAME = Top Assembly Drawing	GENERATED : 4/9/2025 5:04:30 AM	TEXAS INSTRUMENTS	



COMPONENTS MARKED 'DNP' SHOULD NOT BE POPULATED.
ASSEMBLY VARIANT: 001 (ADC3543)

PCB VIEWED FROM BOTTOM SIDE	BOARD #: DC092	REV: G1	SUN REV: a58e6ff928b1c46a2a0dcd37db6576550070a2c5 [Locally Modified]
PLOT NAME = Bottom Assembly Drawing	GENERATED : 4/9/2025 5:04:30 AM	TEXAS INSTRUMENTS	